

BLINCO STREET

NEW HOUSE



BLINCO STREET

NEW HOUSE

DAN MULCAHY

FIFO WORKER; EX-CARPENTER

LIVES IN MELBOURNE

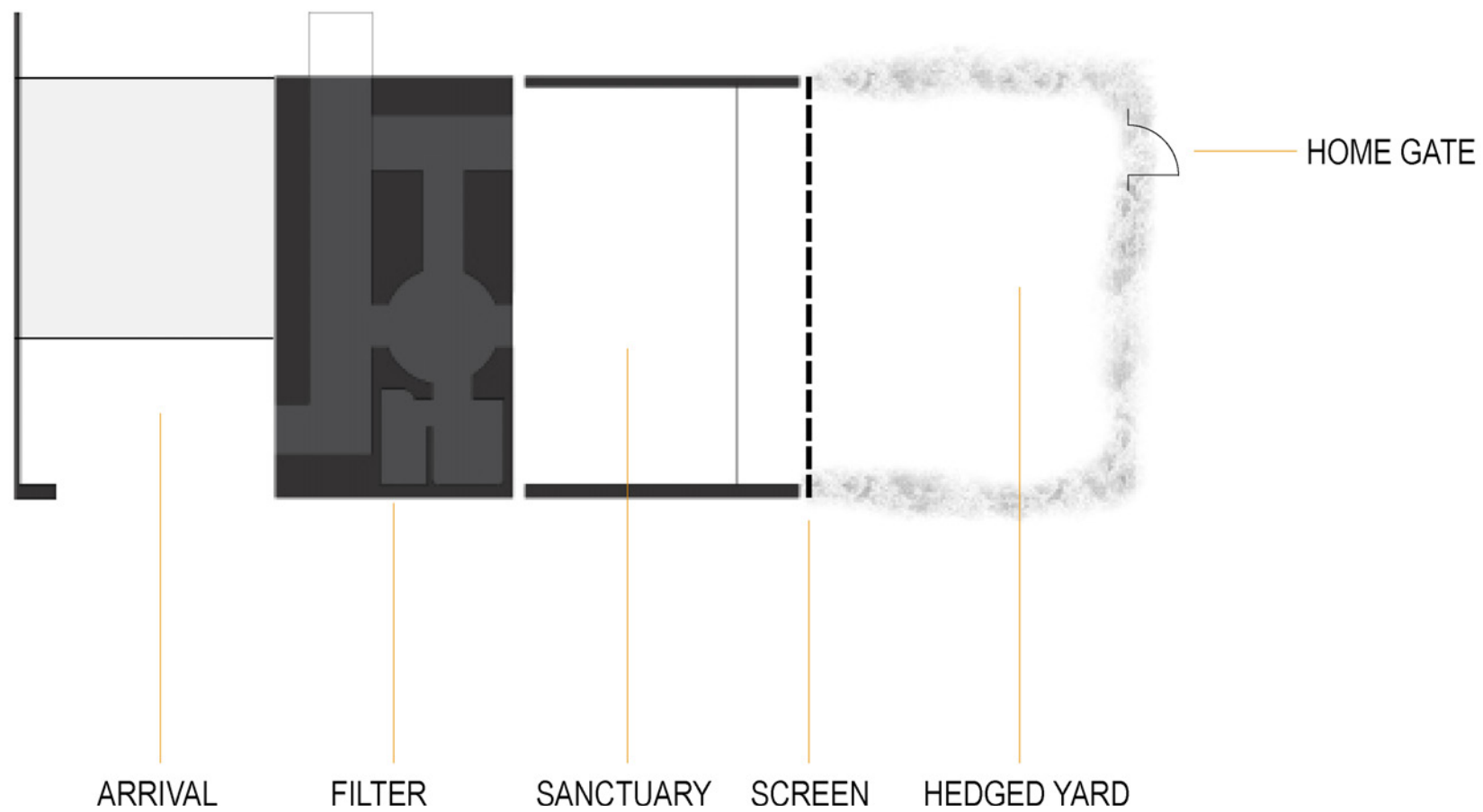
FROM PERTH + PLANNING TO MOVE BACK

LOVES ARCHITECTURE

BRIEF: SANCTUARY FOR WEEKS OFF; LOW MAINTENANCE 'BARE-FOOT' HOUSE; FRIENDS; LAZY DAYS

DAN: A THINKER AND A DOER.





THE ELEMENTS OF A HOME

1. ARRIVAL

- Public zone
- Taxi / car arrival from airport (part of 2 wks on)

2. FILTER

- Transition point between 2wks on / 2 wks off
- Re-orientation
- Ritual of re-setting from work to rest
- **Reflection**
- Spatial compression
- Services / functionality to support Rest

3. SANCTUARY

- Living / dining
- Barefoot zone
- Double height volume
- Fluid connection to yard, yet introverted.

4. SCREEN

- Mediates light and surroundings
- Allows winter sun access
- Screens view to apartment opposite

5. HEDGED YARD

- Privacy
- Backdrop
- Sanctuary
- Compliant

6. HOME GATE

- Access to Fremantle
- Barefoot gate



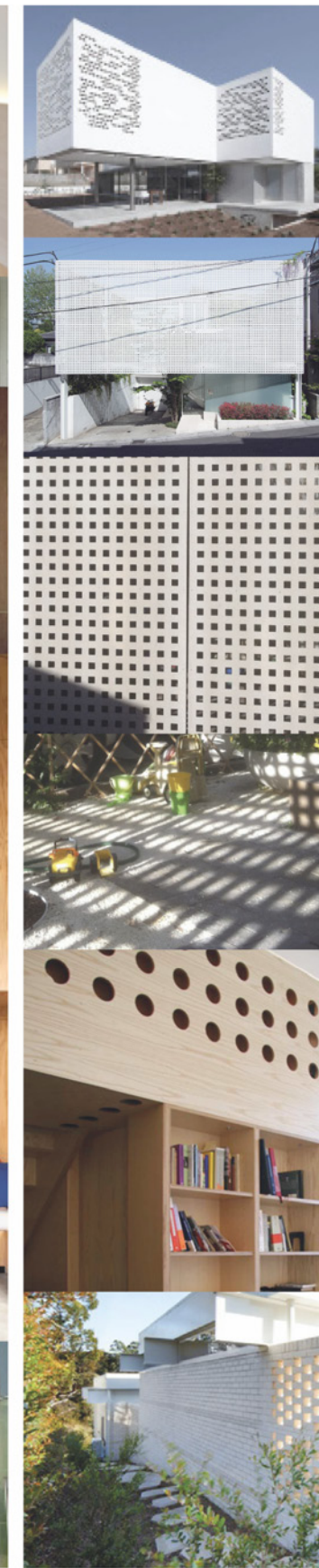
FILTER - Re-orientation



FILTER - Home



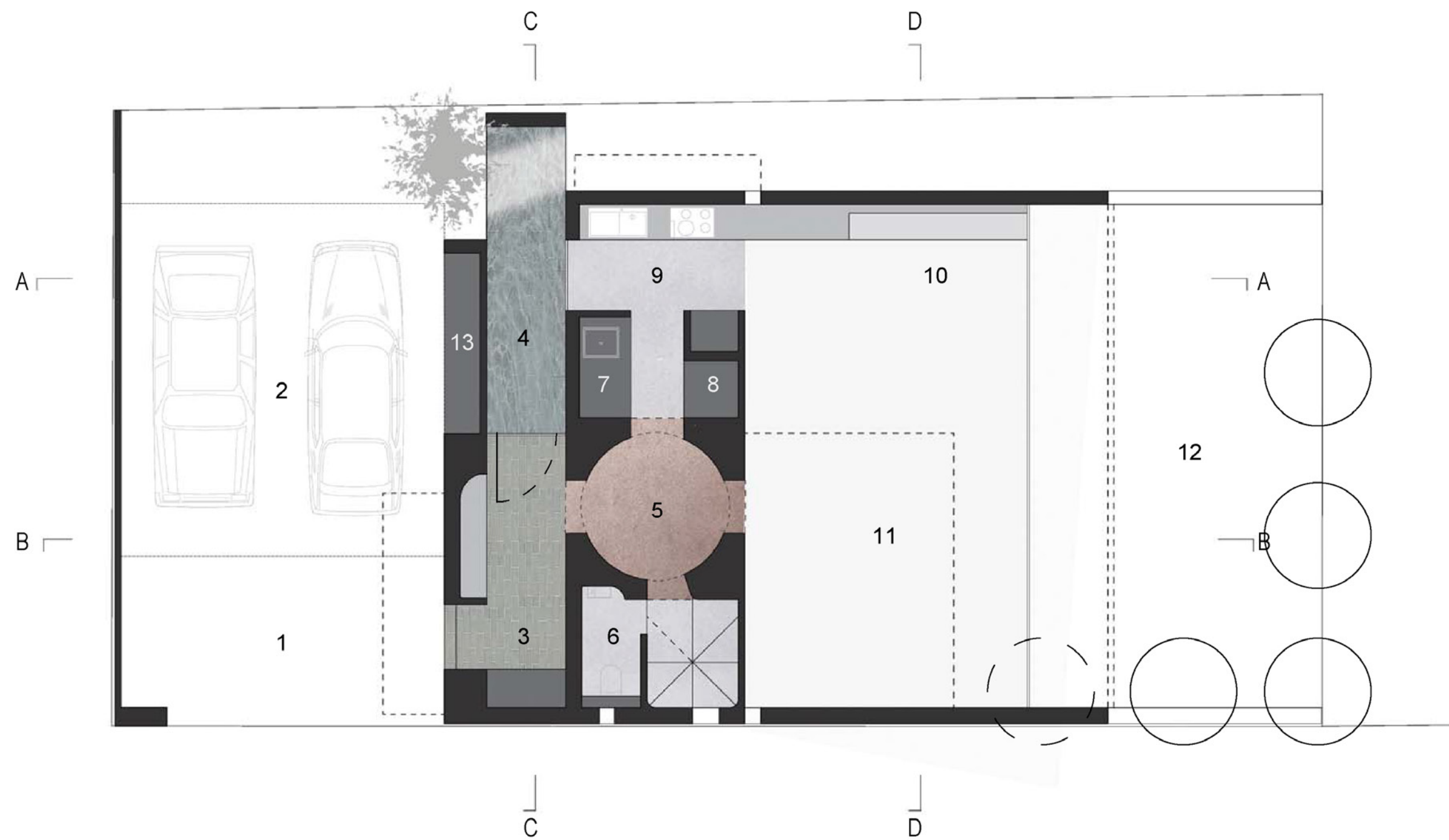
SANCTUARY - Barefoot

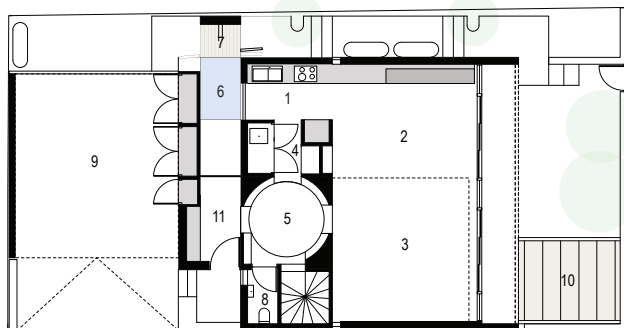
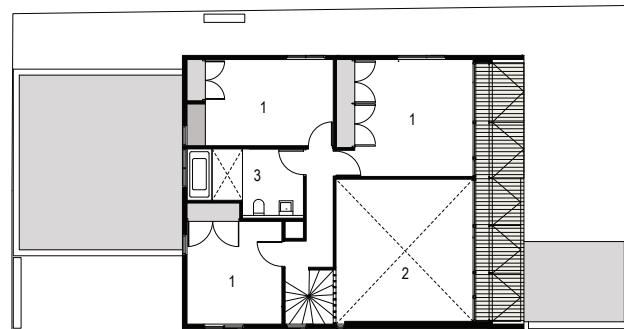
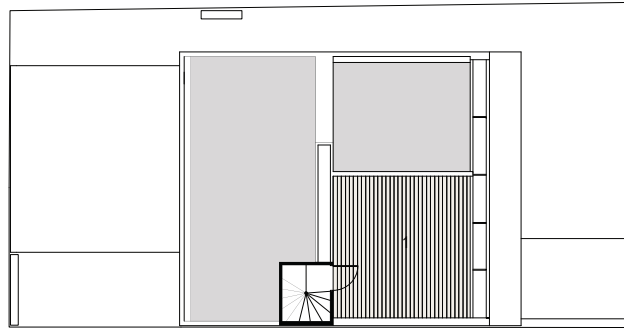


SCREEN



HEDGED YARD



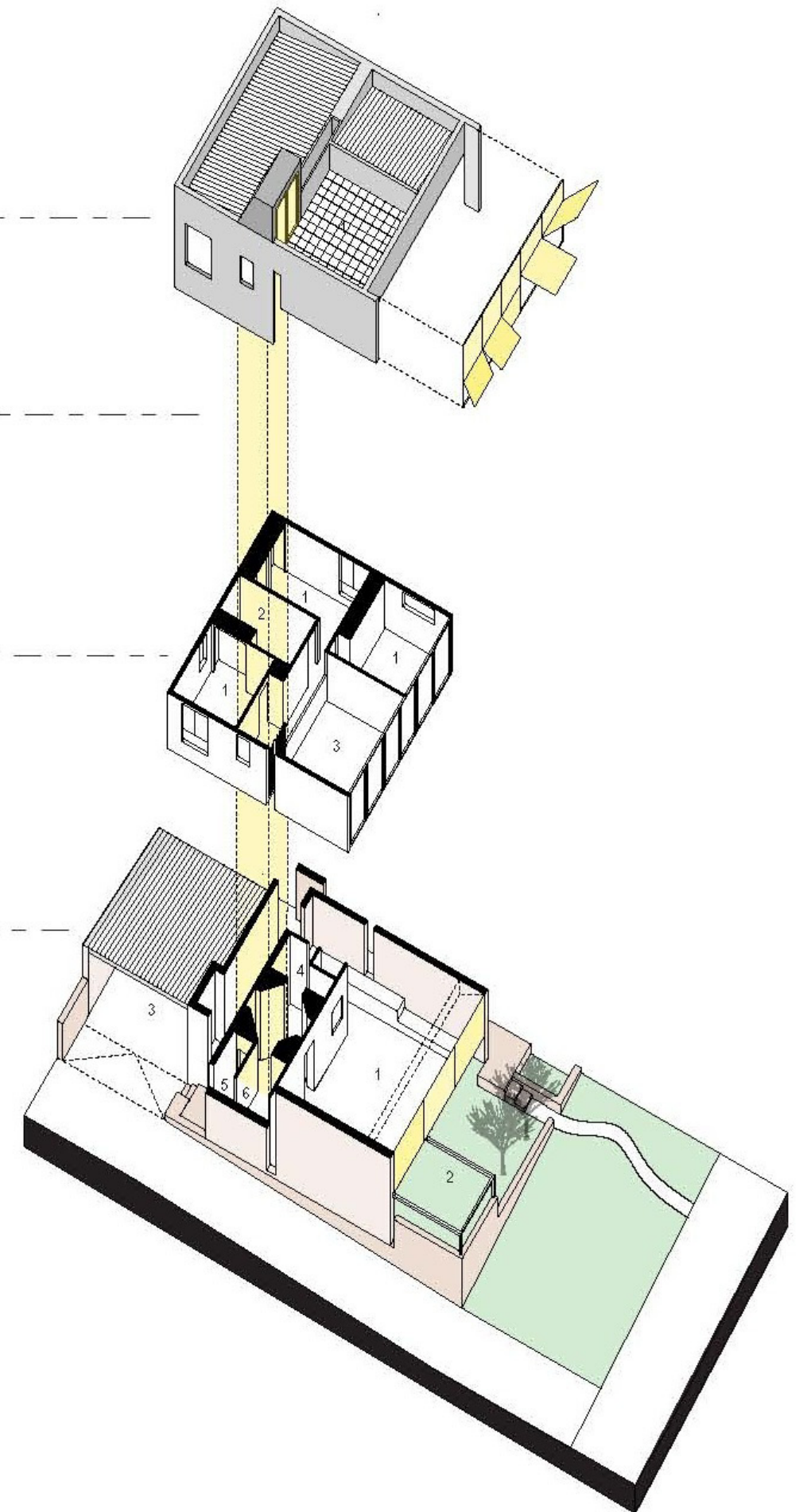


HOOD
1 roof terrace

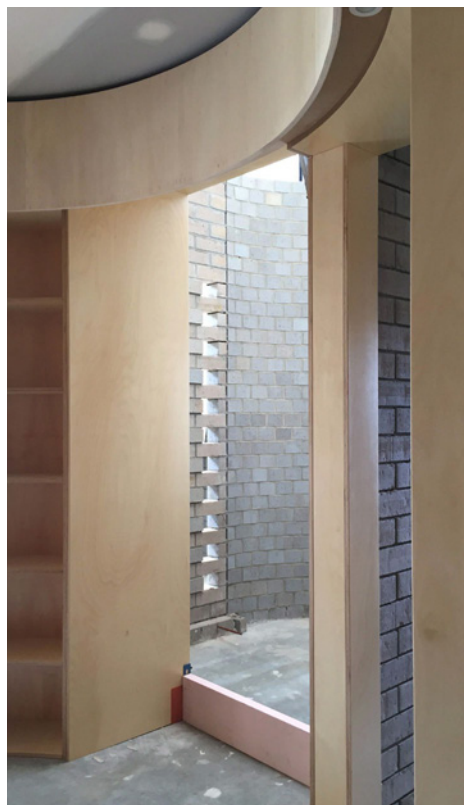
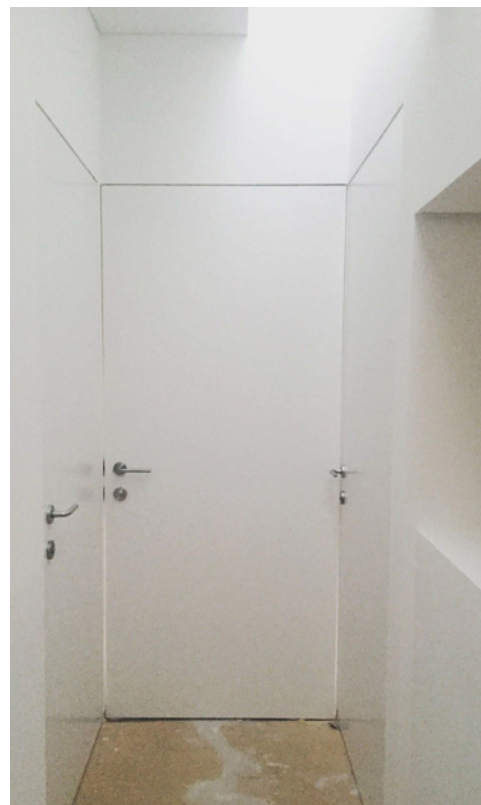
SPIRAL STAIR

FIRST FLOOR SLEEPING
1 bedroom
2 bathroom
3 void

BASE
1 kitchen / living
2 outdoor living
3 car port
4 laundry
5 WC
6 spiral stair / lightwell









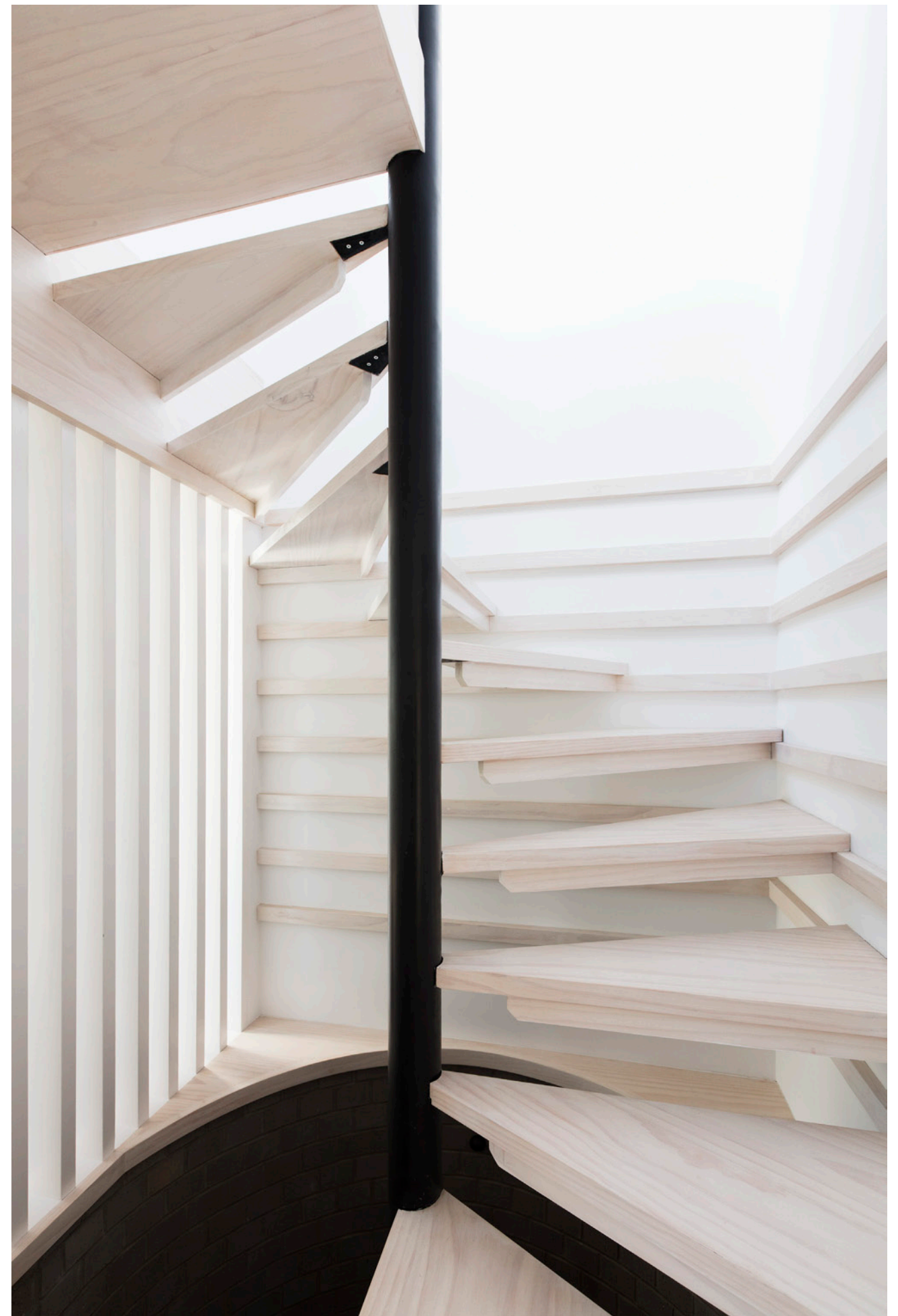
























THANK YOU

