



PHILIP STEJSKAL ARCHITECTURE

FOR MORE INFORMATION VISIT:
www.architecturePS.com
www.architecturePS.tumblr.com



2009
ESTABLISHED

PHILIP STEJSKAL ARCHITECTURE PTY LTD



NATIONAL AIA AWARD
WINNER



PROFESSIONAL
AFFILIATIONS



ARCHITECTURAL BUSINESS
REGISTRATION # 2486



SESSIONAL STAFF MEMBER
UWA



PHILOSOPHY

Our ideological starting point is an engagement with the notion of spatial well-being: an insistence that good design blends pragmatic, intellectual and emotional aspirations. Whilst subjective, we believe the role of an architect is to serve a community. Our aim is to leave a meaningful and lasting contribution with our clients and those around them. As architects, the medium we model is space. We explore ways to maximise space, to define it, bring light and ventilation to it, imbue it with surprise and joy, tailor it to our clients' needs. We have a belief that good architecture has the ability to uplift and inspire, even has a responsibility to do so. Undergirding our philosophy are our systems. Architecture is a pragmatic art that ultimately comes down to negotiating councils, laws, neighbours, site constraints, cost, time, nuts and bolts. We spend a lot of time on site working with trades and builders to ensure the physical outcome meets ours and our clients' expectations. Finally, architecture is a collaborative undertaking. Whilst we are quite happy to deliver projects independently, we prefer to co-author them.

CAPABILITY

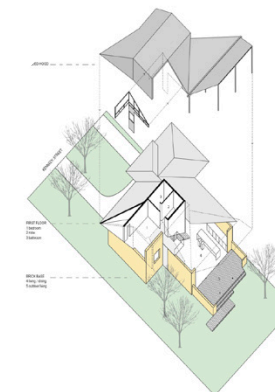
Our team of 3-5 is capable of delivering projects up to a construction value of \$10m by partnering with documentation bureau, Parametric, where required.



METHODOLOGY

We consider architecture a collaborative undertaking. We come to a new project without preconceptions about its outcome, only an enthusiasm to engage authentically in a shared process that ultimately delivers an exceptional and tailored building.

We utilise various strategies to facilitate this collaborative architecture. We listen well to our clients. We use our expertise to translate briefed requirements into spatial concepts. We test and communicate through diagrams, drawings and model making to understand the consequences of design decisions and to find new opportunities worth embracing. Through an iterative and transparent design process between client and architect, we lead the project through clear stages of transformation from vision to reality.



CLIENT FOCUSSED

SMALL PRACTICE INNOVATION

COLLABORATIVE

LARGE PRACTICE
EXPERIENCE

PROBLEM SOLVING

TRANSPARENT
COMMUNICATION

SCALABLE TEAM



ALTERATIONS + ADDITIONS

ESD

REFURBISHMENTS

RESIDENTIAL

INDUSTRIAL

COMMERCIAL

ADAPTIVE REUSE



LARGER PROJECT EXPERIENCE

1. ECU Chancellery & Business School 2. Canningvale College Stage 1 3. Attorney General's Office Fitout, Darwin 4. MG-GT Administration Building, Kununurra 5. Women's Health & Family Services Building 6. International Airport, Check-In 7. Butler Primary School 8. Intercontinental Hotel Interiors, Dubai 9. Mission Australia HQ Fitout 10. Foundation Housing Hostel

HASELL (Spowers) - Perth

2001 - 2005

HASELL - Darwin

2005 - 2006

GA Design International - London

2006 - 2007

CODA Studio - Perth

2007 - 2011

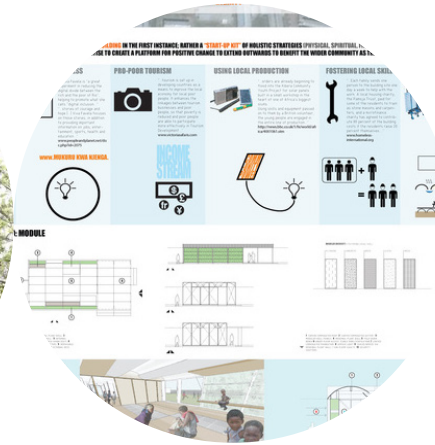
Philip Stejskal Architecture

2009 - PRESENT

ASPIRATIONS



PUBLIC AMENITY



STRATEGIC



CIVIC



EDUCATION



WORKPLACE



REMOTE HOUSING



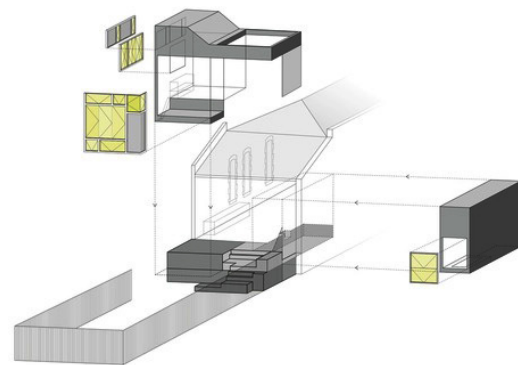
PRO BONO



COMPETITIONS

Our aspiration is to bring our experience in crafting user-centric spaces to a wider clientele. Working with families to create their homes will continue to be a key facet of our practice. However, it is our aim to balance this very intimate work with a contribution to the public realm.

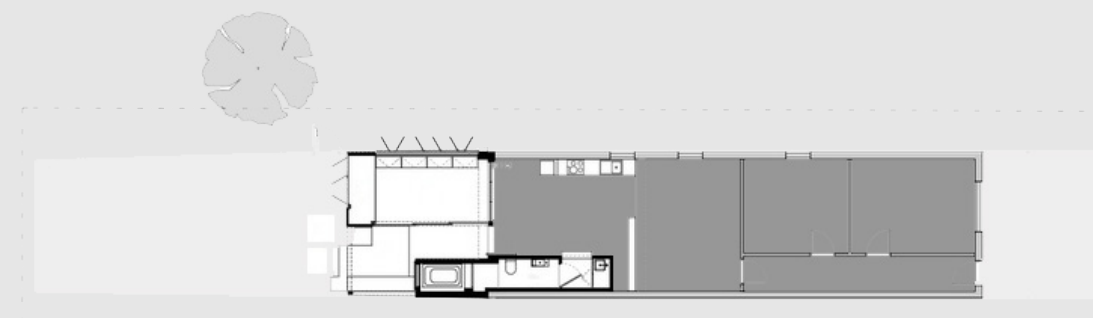
The works depicted on this page represent the societal genres we would love to contribute meaningful architecture within.

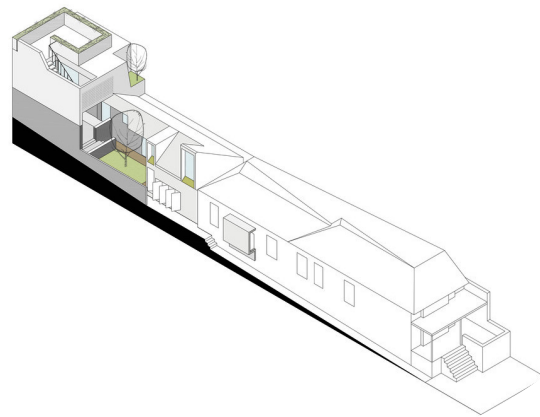


BELLEVUE TERRACE

ADDITIONS AND ALTERATIONS 2013

PHILIP STEJSKAL ARCHITECTURE PTY LTD

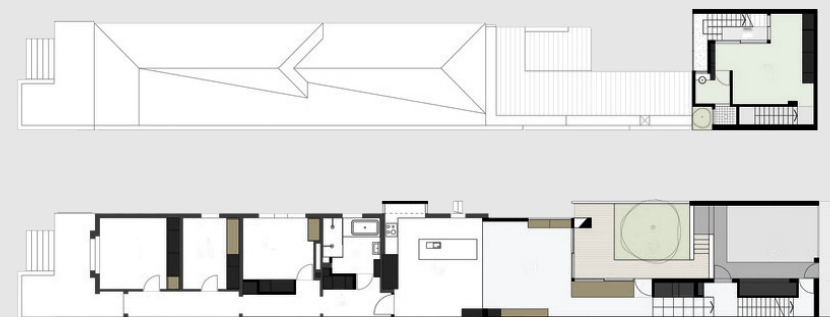




SOUTH TERRACE

ADDITIONS AND ALTERATIONS 2015

PHILIP STEJSKAL ARCHITECTURE PTY LTD

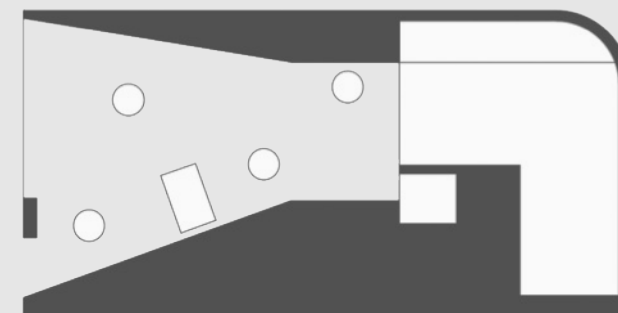


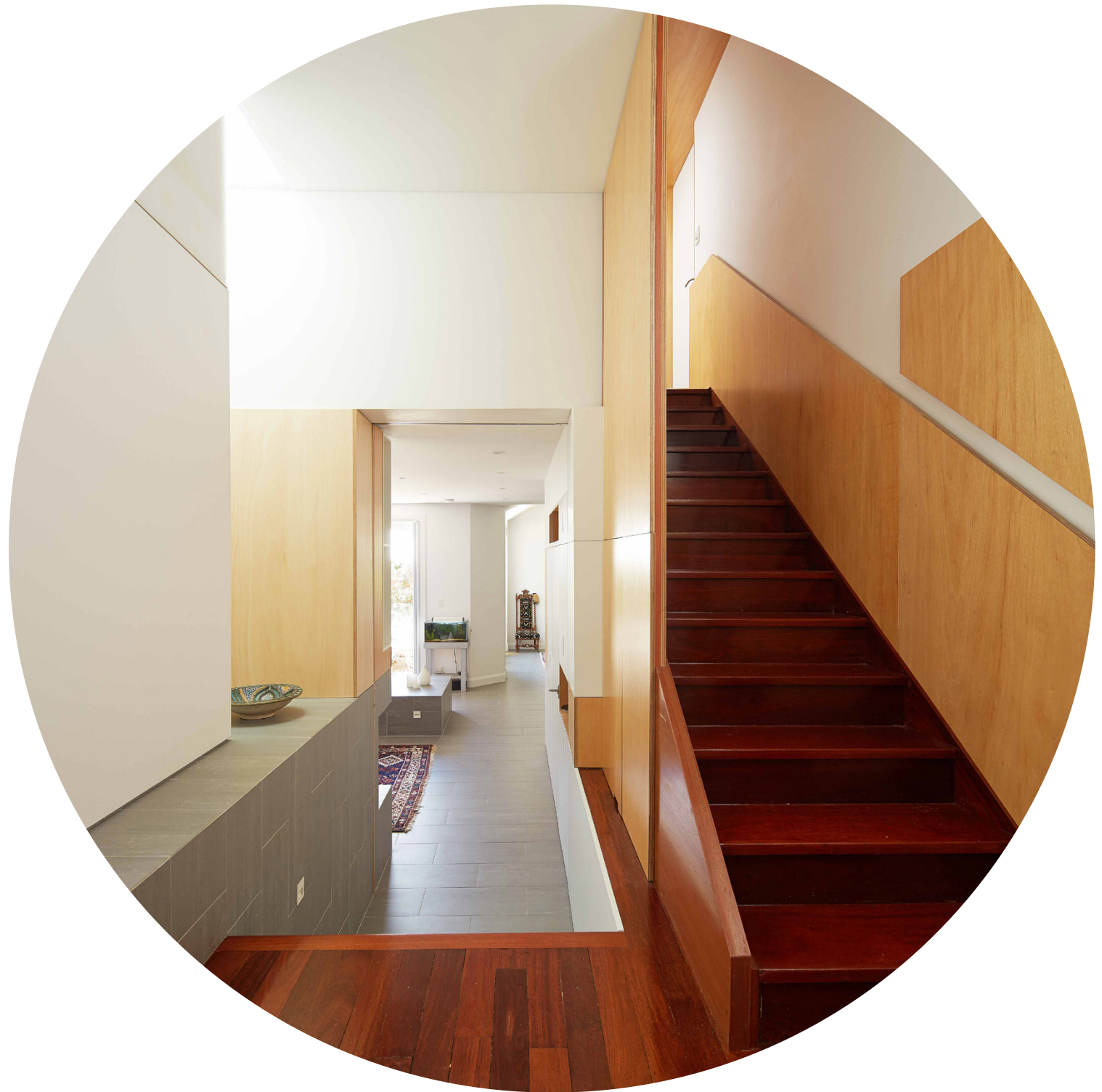


NORDHOFF JEWELLERY COUTURE

RETAIL FITOUT 2013

PHILIP STEJSKAL ARCHITECTURE PTY LTD





SHAKESPEARE STREET

ADDITIONS AND ALTERATIONS 2014

PHILIP STEJSKAL ARCHITECTURE PTY LTD

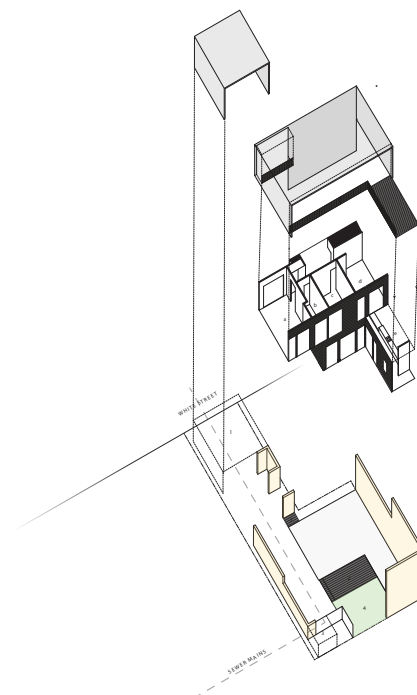
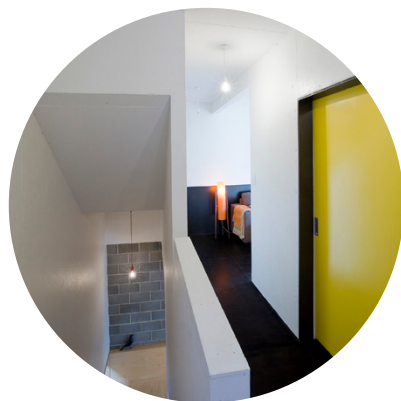




ST MARGARET'S ANGLICAN CHURCH

TOILET FACILITIES 2015

PHILIP STEJSKAL ARCHITECTURE PTY LTD



CANOPY

PROGRAMME

• Kitchen

• Bathroom

• Bedroom

• Living

• Office

GROUNDING ELEMENTS

1. Carport

2. Deck

3. Deck

4. Deck



WHITE STREET

NEW HOUSE 2010

PHILIP STEJSKAL ARCHITECTURE PTY LTD



'THE LANDSCAPE GUYS' WAREHOUSE

WAREHOUSE / OFFICES 2015

PHILIP STEJSKAL ARCHITECTURE PTY LTD

ABOUT US

PHILIP STEJSKAL ARCHITECTURE is a small yet versatile architectural practice with a studio in Fremantle. Since 2009, we have been dedicated to thoughtfully engaging with our clients, the parameters of their brief and site as well as our statutory context, to deliver spaces that are at once specific as they are universal.

Our approach is earnest and enthusiastic. We consider it a privilege to be entrusted with the creation of spaces that will form the backdrop of our clients' lives for years to come. We are passionate about unlocking the potential of existing situations, building on existing strengths to unravel new opportunities and encounters.

We value collaboration and focus. We understand the realities of cost and time. We feel strongly about holistic design; design which blends pragmatic, intellectual and emotional aspirations.

In recent years, we have enjoyed growing recognition among peers and the wider public. In 2014 we were awarded a National Award from the Australian Institute of Architects for one of our residential projects, with our work being included in publications nationally and abroad since.

It is with great delight that we reflect on our growing contribution to the city we call home.



Philip Stejskal
Registered Architect



Claire Holmes
Graduate Architect



Yang Yang Lee
Graduate Architect



Jaime Mayger
Student of Architecture



Louise Allen
Student of Architecture

PHILIP STEJSKAL | DIRECTOR

DIRECTOR
PHILIP STEJSKAL ARCHITECTURE

Registered Architect WA 2006
Bachelor of Architecture UWA, 1st Class Hons, 2001
Bachelor of Environmental Design, UWA 1998

ABN: 93 854 818 466
ARCH REGISTRATION: 2476 (2152)

KEY EXPERIENCE

2009 - Present	SINGLE-RESIDENTIAL ARCHITECTURE - <i>Various Clients</i>
2015	WAREHOUSE - <i>The Landscape Guys</i>
2014	JEWELLERY STORE - <i>Nordhoff Jewellery</i>
2009 - 2012	BUILDING EDUCATION REVOLUTION (for Coda Studio)
2007 - 2011	WOMENS HEALTH & FAMILY SERVICES, NORTHBRIDGE (for Coda Studio)
2010 - 2011	MG/GT ADMINISTRATION BUILDING, KUNUNURRA (for Coda Studio)
2007 - 2011	SINGLE-RESIDENTIAL ARCHITECTURE (for Coda Studio)
2007	CONRAD HOTEL, CAIRO (for GA Design International, London)
2006	INTERCONTINENTAL HOTEL, DUBAI (for GA Design International, London)
2006	SKYCITY CASINO EXTENSIONS, DARWIN (for Hassell)
2006	MIXED-USE DEVELOPMENT, DARWIN (for Hassell)
2005 - 2006	AVIS RENTAL DEPOT, DARWIN (for Hassell)
2005 - 2006	AUSTRALIAN FEDERAL POLICE, OFFICE FITOUT, DARWIN (for Hassell)
2005 - 2006	ATTORNEY GENERALS OFFICE FITOUT, DARWIN (for Hassell)
2005 - 2006	COMMUNITY CENTRE, DARWIN (for Hassell)
2005	MULTI-LEVEL CARPARK, DARWIN (for Hassell)
2005	CANNINGVALE COLLEGE SENIOR SCHOOL, PERTH (for Hassell)
2004	EAST PERTH POWER STATION, RESTABILISATION (for Hassell)
2004 - 2005	PERTH INTERNATIONAL AIRPORT, CHECK-IN COUNTERS (for Hassell)
2002 - 2003	MISSION AUSTRALIA, STATE OFFICES (for Hassell)
2002	MISSION AUSTRALIA, YOUTH RESPITE CENTRE (for Hassell)
2001 - 2003	EDITH COWAN UNIVERSITY, CHANCELLERY (for Hassell / Spowers)

SKILLS SUMMARY

Concept and Architectural Design
Environmentally Sustainable Design
Project Management and Building Services Coordination
Adaptive Re-use
Masterplanning and Feasibility Study
Strategic Thinking



EMPLOYMENT SUMMARY

2009 - PRESENT	Philip Stejskal Architecture
2007 - 2011	CODA Studio, Fremantle
2006 - 2007	GA Design, London
2005 - 2006	HASELL Darwin
2001 - 2005	HASELL Perth

SUMMARY

Philip Stejskal Architecture is a Fremantle based practice founded by registered architect, Philip Stejskal. With 15 years experience in a broad range of building types, Philip has been employed in various offices, gaining experience in projects of varying scale and focus. Philip spent 4 years working with HASSELL Perth, working on institutional projects before relocating to their Darwin office to deliver a diverse series of projects with an emphasis on environmental responsiveness. Employment with CODA Studio allowed him to work on a number of key community projects for organisations such as Women’s Health and Family Services, realising buildings of a complex and multi-layered nature. Most recently, Philip’s attention has turned to crafting the intimate spaces of clients’ homes, with one of these projects receiving a National Award (2014) from the Australian Institute of Architects for its contribution to domestic architecture.



PHILIP STEJSKAL ARCHITECTURE

FOR MORE INFORMATION VISIT:
www.architecturePS.com
www.architecturePS.tumblr.com



THANK YOU

REFEREES

Ann Deanus

CEO, Women's Health & Family Services
227 Newcastle St, Northbridge WA 6003
E: adeanus@whfs.org.au
P: (08) 6330 5400

John Crabtree

Former Managing Director, HASSELL Perth
P: 0408 952 294

Kieran Wong

Design Director, CODA Studio
10 Elder Pl, Fremantle WA 6160
E: kieran@coda-studio.com
P: (08) 9433 6000

Duncan Wyatt

Former Client, Single Residential
202 South Terrace, Fremantle WA 6160
E: duncan.wyatt@outotec.com
P: 0448 426 325
